



A National Evidence-based Implementation Project

Leading Age-Friendly Care in Convenient Care

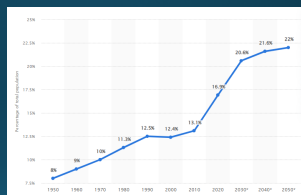
Anne Pohnert, MSN, RN, FNP-BC
Lead Coordinator Director Clinical Quality
CVS Health, CVS MinuteClinic

Mary A. Dolansky, PhD, RN, FAAN
Sarah C. Hirsh Endowed Associate Professor
Frances Payne Bolton School of Nursing
Case Western Reserve University



None of the planners, creators, or presenters for this educational activity have relevant financial relationships to disclose with ineligible companies whose primary business is producing, marketing, selling, re-selling, or distributing health care products used by or on patients

By the year 2034, the Pew Research Center estimates the US will have over 77 million adults over the age of 65, nearly 20 percent of the population of most states and by 2050 nationally we will reach 22% of the population over 65. (Cohn & Taylor, 2010)



US Seniors as a percentage of the population 1950-2050
Published by Statistics Research Department, Aug 2014



The John A. Hartford Foundation

Age-Friendly Health Systems
To Ensure that Older Adults
Receive Evidence-based care



Terry Fulmer, PhD, RN, FAAN
President
The John A. Hartford Foundation

IHI Mission
To improve health and health care worldwide

IHI Vision
Everyone has the best care and health possible




Journal of Aging and Health

Evidence for the 4Ms: Interactions and Outcomes across the Care Continuum

Kader Maki¹, Terry Fulmer², Leslie Nelson¹, Amy Bernier¹, Alice Benner¹, Wendy Huang¹, Jingmei Zhang¹

1Affiliations: [expand](#)
PMID: 3555233 DOI: 10.1177/0898264321991658
[Free article](#)

Abstract
Objectives: An expert panel reviewed and summarized the literature related to the evidence for the 4Ms (what matters, medication, mentation, and mobility) on supporting care for older adults. **Methods:** In 2021, geriatric experts and health system executives collaborated with the Institute for Healthcare Improvement (IHI) to develop the 4Ms framework. Through a strategic search of the IHI database and recent literature, evidence was compiled in support of the framework's practice clinical outcomes. **Results:** Addressing what matters from the outset of care planning improved both psychological and physiological health outcomes. Using screening protocols such as the Brief Symptom Inventory (BSI) and the Geriatric Depression Scale (GDS) improved depression and mood. Fall risk and physical function assessment with early goals and safe environments allowed for safe mobility. **Discussion:** Through a framework that reduces cognitive load of providers and improves the reliability of evidence-based care for older adults, all clinicians and healthcare workers can engage in age-friendly care. **Keywords:** goal-directed care, quality, safety.




Evidence-Based Care Not Reliably Applied

- We have lots of evidence-based geriatric-care models of care that have proven very effective
- Yet, most reach only a portion of those who could benefit
 - Difficult to disseminate and scale
 - Difficult to reproduce in settings with less resources
 - May not translate across care settings

Model Beneficiaries

Category	Percentage
Unreached	~90%
Reached	8.7%

WBI Analysis of Model Beneficiaries 2016
 Total Reached = 8.7%
 Total Unreached = 91.3%

23

Age-Friendly Health Systems

Build a movement so *all care* with older adults is *age-friendly care*.

Guided by an essential set of evidence-based practices (**4Ms**)
 Causes no harms
 Is consistent with *What Matters* to the older adult and their family

Aim: Reach older adults in 2,600 hospitals, practices, convenient care clinics, and nursing homes that apply the 4Ms equitably and are recognized as Age-Friendly Health Systems Participants by June 30, 2023

Patton, C., Smith, K. G., & Peterson, A. (2019). The Age-Friendly Health System Initiative. *Journal of the American Geriatrics Society*, 67(1), 22-31.

DEDICATED TO IMPROVING THE CARE OF OLDER ADULTS

Why the 4Ms?

- Represents core health issues for older adults
- Builds on strong evidence base
- Simplifies and reduces implementation and measurement burden on systems while increasing effect
- Components are synergistic and reinforce one another

© 2019 The John A. Hartford Foundation. All rights reserved.

How would one implement the 4Ms at a National NP-led Convenient Care Practice?



- ❖ IHI Age-Friendly Health System Action Community
- ❖ Front-Line provider feedback, focus groups
- ❖ "4Ms Definitions"
- ❖ Patient interviews
- ❖ Development of Patient-Facing Materials
- ❖ Development of Orientation and other Training Content
- ❖ Design and Build of Epic 4Ms Workflow
- ❖ Data Analytics

Implementation Science



Determinants Framework
Consolidated Framework for Implementation Science




Evaluation Framework
RE-AIM Framework: Reach, Effectiveness, Adoption, Implementation, and Maintenance




Strategies
Expert Recommendations for Implementing Change "ERIC"

Consolidated Framework for Implementation Science



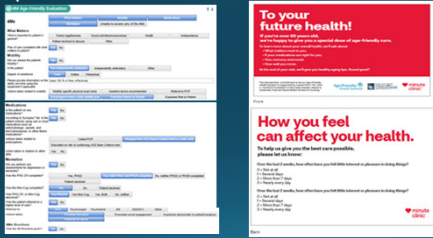
Inner Setting
Outer Setting
Individuals
Intervention
Process



Special Issue
Pre-Implementation of the Age-Friendly Health Systems Evidence-Based 4Ms Framework in a Multi-State Convenient Care Practice
Mary A. Dolansky PhD, RN, FAAN, Anne Palmer MSN, RN, FNP-BC, Sarah Ball MSN, RN, FNP-C, Mary McCormack MSN, MPH, APAC, Robin Hughes RN, MSN, AGNP-BC, Lila Piro PhD, RN, FNP-C
First published: 15 April 2021 | <https://doi.org/10.1111/jwn.12498> | Citations: 3

Barriers and Facilitators

Practice Based Tools: Epic Health Record Pocket Card



Practice Based Tools: Patient 4Ms Brochure

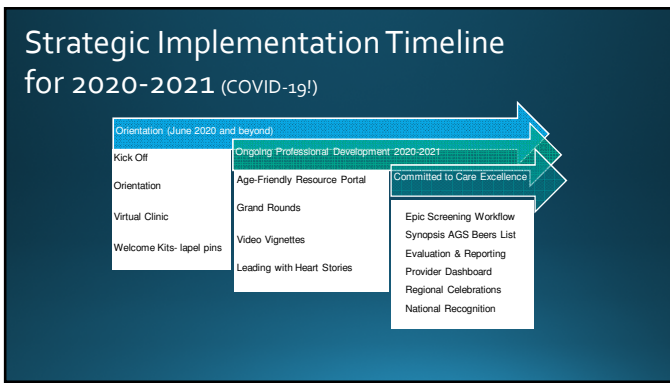



- Developed by CWRU Faculty, IHI Consultants and MC Implementation Team
- Reviews Age-Friendly Health Systems Purpose and History
- Introduces 4Ms: What Matters, Medication, Mentation & Mobility
- Space for NP to document "Action Steps" pertaining to each "M"

Age-Friendly Health Systems MinuteClinic Orientation "Roadmap"

The graphic features a red heart with the text 'Age-Friendly Health Systems Roadmap'. Below it is a checklist of steps for orientation, including logging in to AFIN, completing orientation modules, accessing the Virtual Clinic, and reviewing various resources. To the right is a circular diagram with '4Ms Framework' at the center, surrounded by icons for 'What Matters', 'Medication', 'Mentation', and 'Mobility'.

Bringing Age-Friendly Health Care to our group practice!





Ongoing outreach & feedback for improvement

- ◆ Top performers to identify best-practices
- ◆ Late adopters to develop a support-plan
- ◆ Internal MC Intranet page development for easy access to resources
- ◆ Gather feedback from the field and share with the national Age-Friendly Regional Champion team
- ◆ Updated training tools, demonstration, role-playing

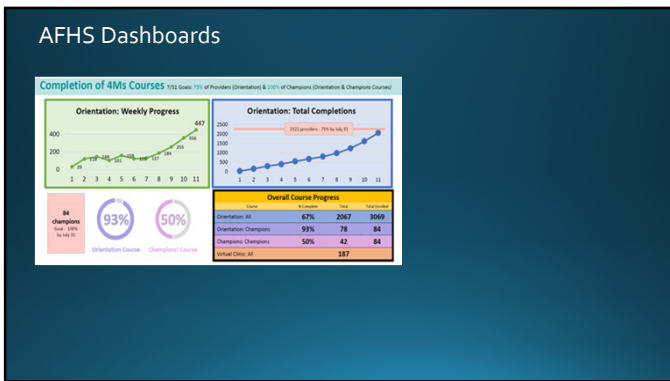
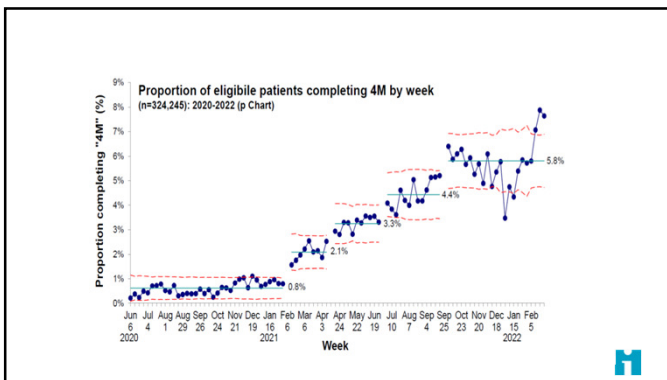


Tableau Data Analytics

- Support Real Time Monitoring of 4Ms implementation & Interventions
- > 32K Total 4Ms visits
- > 300,000 "Ms" assessed/acted on since implementation June 2020

The screenshot shows a Tableau dashboard with a data table at the top and two charts below. The top chart is a line graph showing a steady increase in 4Ms visits over time. The bottom chart is a multi-line graph showing various metrics related to 4Ms implementation across different categories.



Age-Friendly Health Systems
Committed to Care Excellence for Older Adults

MinuteClinic has achieved IH Age-Friendly Health System Committed to Care Excellence designation in 16 Regions to date (100%)

The map shows various states across the US color-coded by region. A legend on the right indicates the color key for the regions.



Key Driver

- Executive
- Managerial
- Front-line

*Publication in Nurse Leader, February 2023

~Thank You~

Anne M. Pohnert, MSN, RN, FNP-BC
Anne.Pohnert@cvshealth.com

Mary Dolansky, PhD, RN, FAAN
Mary.Dolansky@case.edu
